



# John Reid Consultancy Services Ltd

## Case Study – Autumn 2009

### Services:

- Consultancy
  - Business requirements
  - Needs Analysis
  - Achieving 'Best Value'
  - RMMS
  - UKPMS
  - Asset Management
- Surveys
  - Procurement
  - Tendering
  - Supervision
  - Project Management
  - Data Processing
  - Reports
  - Presentations
- Systems
  - Specification
  - Best Use
  - Management
  - New Solutions
- Training
  - Related to any of the above

## Portsmouth Inventory Survey

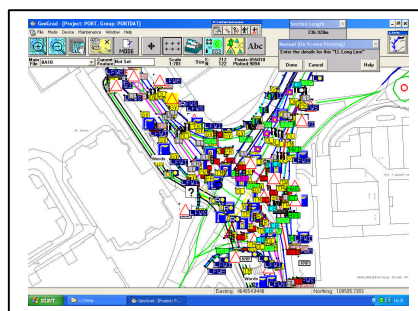


### Portsmouth City Council

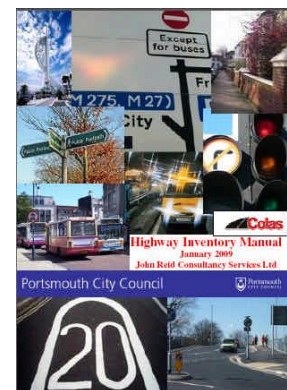


Starting in January 2009, a complete survey of the roads falling within the Portsmouth City boundary was conducted by John Reid Consultancy Services. The 511 kilometers of mainly urban road were covered by John and two of his sons, Chris and Richard. In order to meet the tight time constraints it was also necessary to introduce extra inspectors into the mix for the last couple of weeks up to the end of July. The data was handed over to the Client, Colas Ltd, who commissioned the survey as part of their PFI commitment to the City, in both Arc-Info files and the usual RMMS format. It has now been successfully loaded into their in-house database and GIS.

An important part of the process was to prepare a full and comprehensive Inventory Manual which contained all the details of the items to be collected. This acted not only as the specification for the job but also as an aide-memoire for the inspectors undertaking the work. It formed a record of how the survey was undertaken enabling the Client to see how and why data was recorded. It will also prove useful in the future for training new staff to carry out update surveys.



**A really busy junction but we coped!**



John Reid Consultancy Services Ltd – 07766 760030 or [john@jrcon.co.uk](mailto:john@jrcon.co.uk)

John Reid  
Consultancy  
Services Ltd

3 Meadow Road  
Windermere  
Cumbria  
LA23 2EU

PHONE:  
(+44)15394 42006  
(+44)7766 760030

E-MAIL:  
john@jrcon.co.uk

We're on the Web!  
See us at:  
[www.jrcon.co.uk](http://www.jrcon.co.uk)

Principal is John Reid  
BA (Hons.)  
FIHT  
Dip HC&M  
MIAM

Member of the  
Institute of Asset  
Management



For what we are about to receive.....

**Assets Collected:**

The following items were recorded:

- Carriageway
- Anti-skid Material
- Islands
- Central Reserves
- Footways
- Cycle Tracks
- Kerbs
- Channels
- Gullies
- Grips
- Piped Grips
- Culverts
- Bollards
- Dropped Crossings
- Detector Loops
- Paved Verges
- Safety Fences
- Pedestrian Guardrails
- Litter Bins
- Cycle Stands
- Shelters

- Seats
- Signs
- Pedestrian Crossings
- Road Studs
- Traffic Claming Items
- Street Name Plates
- Bus Lanes
- Illuminated Items
- Road Markings
- Cameras
- Reflective Bollards
- Sewer Vents
- Fences and Barriers
- Other Miscellaneous items



Portsmouth – City of progress

*Offering independent advice on  
Highway Assessment Surveys and Systems*

