



John Reid Consultancy Services Ltd

Case Study – Autumn 2006

Services:

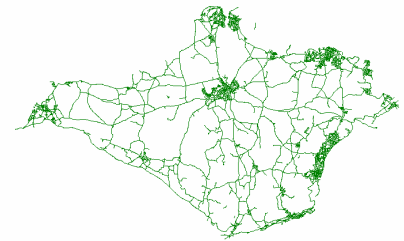
- Consultancy
 - Business requirements
 - Needs Analysis
 - Achieving 'Best Value'
 - RMMS
 - UKPMS
 - Asset Management
- Surveys
 - Procurement
 - Tendering
 - Supervision
 - Project Management
 - Data Processing
 - Reports
 - Presentations
- Systems
 - Specification
 - Best Use
 - Management
 - New Solutions
- Training
 - Related to any of the above

Isle of Wight Inventory Survey



As detailed in Surveyor: You will see from the article in the 19 October 2006 edition of Surveyor magazine (page 16) titled 'Charting Progress', that the Isle of Wight council has collected a full and detailed inventory of their highway assets (over 147,000 point records translating to 110,000 inventory items). The data was collected by John Reid Consultancy Services Ltd between May and September 2006 on Panasonic Toughbook mobile computers to position the details onto Ordnance Survey maps based on their MasterMap series. The council requires this information to form an integral part of their multimillion-pound bid for private-finance initiative (PFI) funding for highway maintenance.

The Network: The total length of the network surveyed turned out to be 10% more than expected at 880 kilometers which included some urban footways. Referencing details were provided as a MapInfo GIS overlay with accompanying street list in Excel.



Network Extents

For each road, a unique number based on its NSG reference was created and linked to the maps using its Oscar reference. The survey took just over 4 months to complete.

Data Collection Software: The GeoGrad data collection software was used to capture the location of each inventory item by zooming to the appropriate scale of map and placing the item accurately with a stylus thereby fixing its position by visual reference to points on the map. On lengths of the network with few or no visual features, an in-built GPS receiver was used to assist the surveyors to fix their location.

John Reid Consultancy Services Ltd

3 Meadow Road
Windermere
Cumbria
LA23 2EU

PHONE:
(+44)15394 42006
(+44)7766 760030

E-MAIL:
john@jrcon.co.uk

We're on the Web!

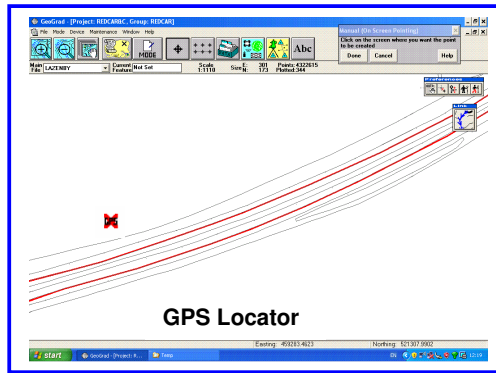
See us at:



www.jrcon.co.uk

Principal is John Reid
BA (Hons.)
FIHT
Dip HC&M
MIAM

Member of the
Institute of Asset
Management



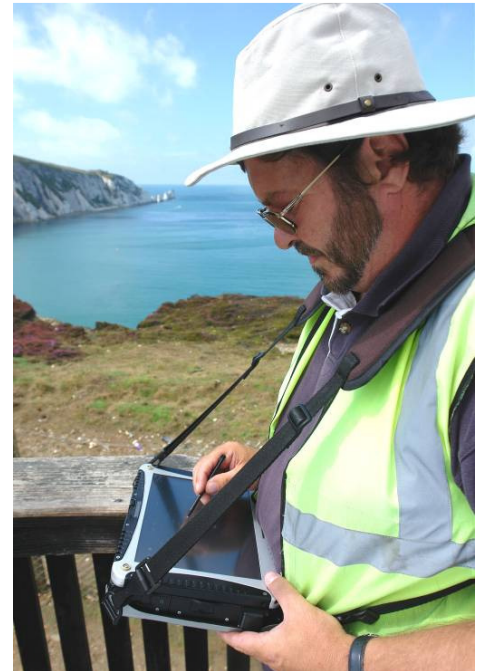
Assets Collected:

The following items were recorded:

- Carriageway
- Lay-bys
- Islands
- Central Reserves
- Footways
- Cycle Tracks
- Kerbs
- Channels
- Gullies
- Grips
- Piped Grips
- Culverts
- Bollards
- Dropped Kerbs
- Detector Loops
- Paved Verges
- Trees
- Safety Fences
- Pedestrian Guardrails
- Bins
- Shelters

- Cycle Stands
- Seats
- Planters
- Signs
- Pedestrian Crossings
- Road Studs
- Traffic Claming Items
- Street Name Plates
- Other Miscellaneous items

A general condition was also recorded for those items which are not assessed by other surveys such as UKPMS. The details of the electrical items are already known and therefore not included.



Just to prove we were there – Great hat!

***Offering independent advice on
Highway Assessment Surveys and Systems***

