



John Reid Consultancy Services Ltd

Case Study – Spring 2006

Services:

- Consultancy
 - Business requirements
 - Needs Analysis
 - Achieving 'Best Value'
 - RMMS
 - UKPMS
 - Asset Management
- Surveys
 - Procurement
 - Tendering
 - Supervision
 - Project Management
 - Data Processing
 - Reports
 - Presentations
- Systems
 - Specification
 - Best Use
 - Management
 - New Solutions
- Training
 - Related to any of the above

Redcar & Cleveland Borough Council Inventory Survey



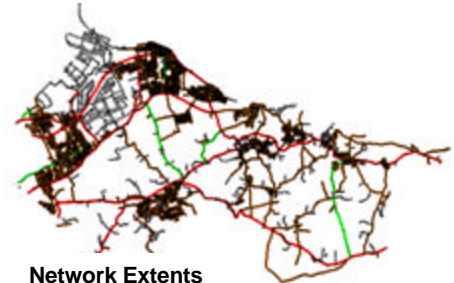
Redcar & Cleveland
Highways Services



"Working together to provide best value Highways Services"

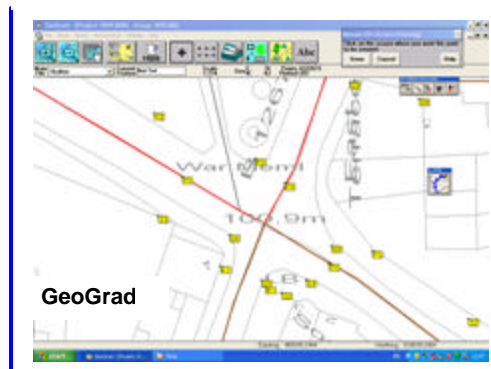
The Need: Driven by the national requirement to formalize their Asset Management, the Council tasked their joint venture partner (Alfred McAlpine) to collect and quantify a countywide inventory of their highway maintenance assets including gullies, non-illuminated signs and other street furniture. JRCS Ltd were approached to assist with this task and conduct the survey work.

The Network: The total length of the network surveyed was 725 kilometers divided into 35 areas. Referencing details were provided as a MapInfo GIS overlay with accompanying street list in Excel.



Network Extents

The nature of the roads covered the total spectrum of urban and rural at all levels from busy high streets to back lanes. For each road, a unique number based on its NSG reference was created and linked to the maps using its Oscar reference. The survey took 3 months to complete.



Data Collection Software: The GeoGrad software from Steanne Solutions was used to capture the location of each inventory item. This was done by zooming to the appropriate scale of map and placing the item accurately with a stylus fixing its position by visual reference to points on the map. On lengths of the network with few or no visual features, an in-built

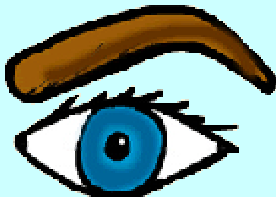
John Reid
Consultancy
Services Ltd

3 Meadow Road
Windermere
Cumbria
LA23 2EU

PHONE:
(+44)15394 42006
(+44)7766 760030

E-MAIL:
john@jrcon.co.uk

We're on the Web!
See us at:



www.jrcon.co.uk

Principal is John Reid
BA (Hons.)
FIHT
Dip HC&M
MIAM

Member of the
Institute of Asset
Management

GPS receiver was used to assist the surveyors to fix their location.

The System: The collected data has been fully validated, loaded and passed over to the Council in GeoMaintenance Manager (GeoMM) from JRCS Ltd. The system provides a robust database which enables full data management and which produces maintenance reports, selective listings and quantities.



GeoMM is fully map-enabled and operates efficiently over a local area network or, if desired, on the web.

Description	Count	Length	Area/Depth
Manhole Covers	765		
Manhole Covers	765		
Manhole Covers	2070		
Manhole Covers	460		
Manhole Covers	110		
Manhole Covers	44		
Manhole Covers	2070		
Manhole Covers	110		
Manhole Covers	44		
Manhole Covers	2070		
Manhole Covers	110		
Manhole Covers	44		

Quantified Inventory Report



The Future: Now that the Council has full details of the quantity and location of their highway maintenance assets, the next stage is to agree how these will be valued and add the appropriate algorithms to GeoMM to calculate them. It is expected these will be based on an items condition and related to its initial or replacement value. The mechanism for collecting asset condition still needs to be determined along with procedures for ensuring that the base data is kept up to date as changes to the network occur. Additional existing modules of GeoMM which cover Highway Safety Inspections and Defect Management have been offered to the Council and the further ability to record inventory condition is currently being added to the system. JRCS Ltd is committed to ensuring that GeoMM remains in line with national requirements for Asset Valuation.

*Offering independent advice on
Highway Assessment Surveys and Systems*

