



# John Reid Consultancy Services Ltd

## Newsletter – Spring 2010

John Reid Consultancy Services Ltd – 07766 760030 or [john@jrcon.co.uk](mailto:john@jrcon.co.uk)

### Services:

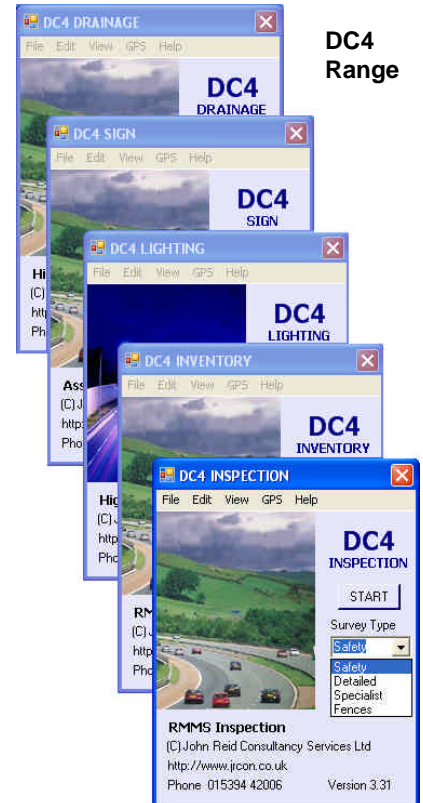
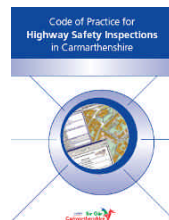
- [Consultancy](#)
  - Business requirements
  - Needs Analysis
  - Achieving 'Best Value'
  - RMMS
  - UKPMS
  - Asset Management
- [Surveys](#)
  - Procurement
  - Tendering
  - Supervision
  - Project Management
  - Data Processing
  - Reports
  - Presentations
- [Systems](#)
  - Specification
  - Best Use
  - Management
  - New Solutions
- [Training](#)
  - Related to any of the above

### The Magnificent Seven

We have just completed our seventh year in business and are still offering our unrivalled expertise in **Highway Asset Data Collection and Systems**. We have a complete package from our **DC4 data collection range** through to full management systems for Routine Inspections (**GeoMM**) and Street Lighting (**GeoLight**). We can either collect your asset data for you or load it from information you already have no matter what the source. All of our systems come ready-loaded with your network, maps and are configured for you to start using them immediately.

### The Carmarthenshire experience

We have been working with Carmarthenshire CC since 2004 and in early 2010 reached the end of our prime objective. Their Highway Safety Inspectors were checked and accredited by John Reid and certified as complying with the procedures in their Code of Practice, Highway Inspectors Manual and Notes for Guidance documents all of which were produced for them by JRCS Ltd. A case-study can be downloaded from our website.



DC4 Range

### Features of DC4

- Contains survey network and/or routes.
- GPS can determine start of section, chainage or item location co-ordinates.
- Entry by menu or text with full error checking.
- Data can be uploaded to the internet from site and survey files/updates downloaded.
- System independent.
- Can include photographs.

John Reid  
Consultancy  
Services Ltd

3 Meadow Road  
Windermere  
Cumbria  
LA23 2EU

PHONE:  
(+44)15394 42006  
(+44)7766 760030

E-MAIL:  
john@jrcon.co.uk

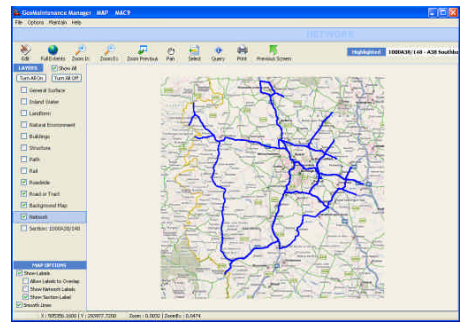
We're on the Web!  
See us at:  
[www.jrcon.co.uk](http://www.jrcon.co.uk)

Principal is John Reid  
BA (Hons.)  
FIHT  
Dip HC&M  
MIAM

Member of the  
Institute of Asset  
Management

## DC4 – Data Collection Software and GeoMM introduced into MAC9

Highways Agency Area MAC9, operated by Amey LG, has become the latest agent to take up both DC4 and GeoMM. They are utilising Nomad hand-held computers to collect the data and can transmit the files to a protected area on the JRCS website directly from these devices. When they log in to their GeoMM management system, the files are automatically downloaded and compiled into works orders for issue to their works section and transfer to their internal works ordering software. All data can be accompanied by OSGR co-ordinates obtained from the in-built GPS receiver and optionally a linked photograph of each defect. These are plotted on their background maps for easy management.

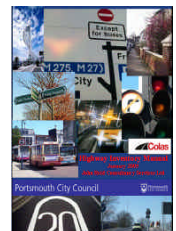


### The MAC9 network

#### Portsmouth completed

The Inventory survey of all roads within Portsmouth City, commissioned by Colas Ltd as part of their ongoing PFI commitment, was completed in July last year.

An integral part of this contract was the production of a comprehensive Inventory Manual to act as both a



specification for the work and an aide-memoire for the surveyors. It will prove useful in the future when updates are undertaken. A case-study can be downloaded from our website.

#### Major surveys in last 3 years

- Redcar & Cleveland Inventory
- Isle of Wight Inventory
- LB Ealing Inventory
- Carmarthenshire housing footway condition survey
- Portsmouth Inventory
- A1M Inventory

*Offering independent advice on  
Highway Assessment Surveys and Systems*

